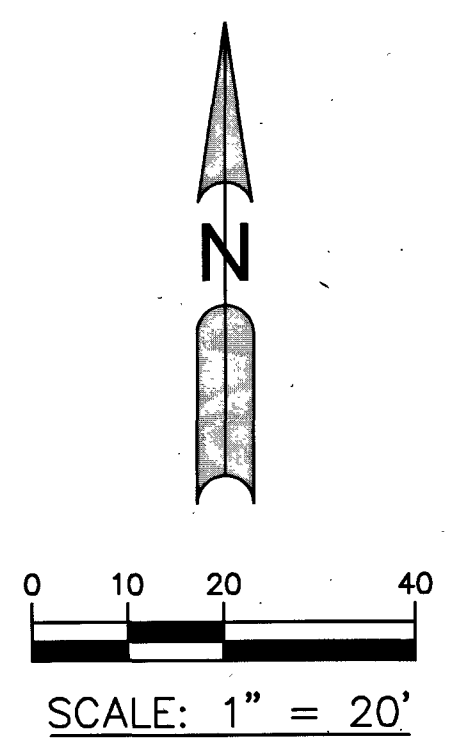
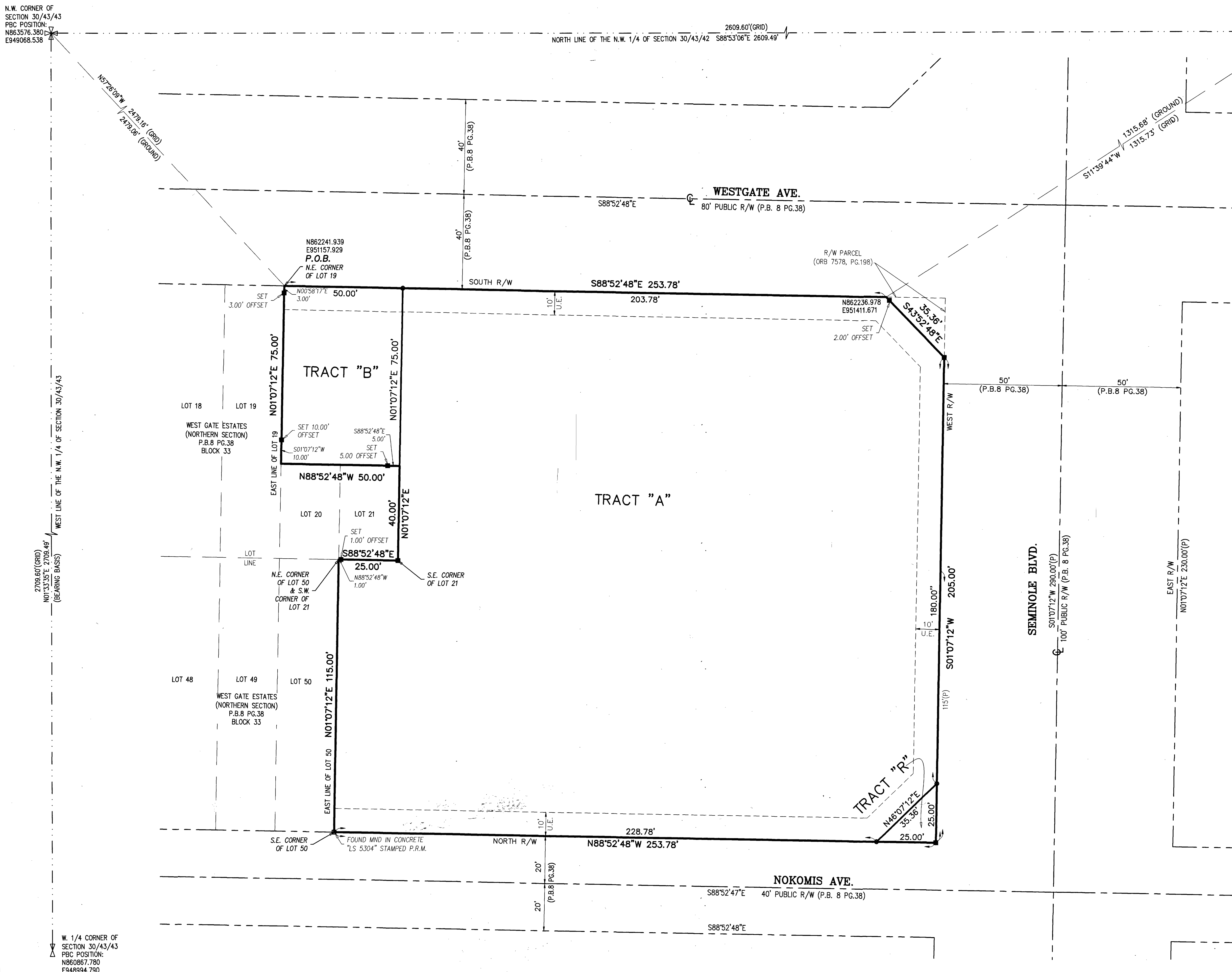


# FIRE STATION NO.24

BEING A REPLAT LOTS 20 AND 21, LESS THE SOUTH 40 FEET THEREOF, LOTS 22 - 30, AND LOTS 51 - 60, BLOCK 33, WEST GATE ESTATES, (NORTHERN SECTION) PLAT BOOK 8, AT PAGE 38, OF THE PUBLIC RECORDS OF PALM BEACH COUNTY, FLORIDA, LYING IN THE NORTHWEST QUARTER OF SECTION 30, TOWNSHIP 43 SOUTH, RANGE 43 EAST, PALM BEACH COUNTY, FLORIDA

SHEET 2 OF 2



**STATE PLANE COORDINATES:**

- A. COORDINATES SHOWN ARE GRID
- B. DATUM - NAD 83, 1990 ADJUSTMENT
- C. ZONE - FLORIDA EAST
- D. LINEAR UNIT - US SURVEY FOOT
- E. COORDINATE SYSTEM 1983 STATE PLANE
- F. TRANSVERSE MERCATOR PROJECTION
- G. ALL DISTANCES ARE GROUND UNLESS OTHERWISE NOTED
- H. SCALE FACTOR = 1.0000413
- I. GROUND DISTANCE x SCALE FACTOR = GRID DISTANCE
- J. ROTATION EQUATION: NONE

**LEGEND:**

**ABBREVIATIONS:**

- P.O.C. - POINT OF COMMENCEMENT
- P.O.B. - POINT OF BEGINNING
- ORB - OFFICIAL RECORD BOOK
- P.B. - PLAT BOOK
- NO. - NUMBER
- PG. - PAGE
- R/W - RIGHT-OF-WAY
- SEC. - SECTION
- PBC - PALM BEACH COUNTY
- ℄ - CENTERLINE
- NAD - NORTH AMERICAN DATUM
- LB - LICENSED BUSINESS
- 30/43/43 - SECTION 30, TOWNSHIP 43 SOUTH, RANGE 43 EAST
- U.E. - UTILITY EASEMENT
- D.E. - DRAINAGE EASEMENT
- (G) - GROUND DISTANCE

**SYMBOLS:**

- PERMANENT REFERENCE MONUMENT (P.R.M.), SET 4"x4" CONCRETE MONUMENT WITH DISK STAMPED "PRM LB6473"

PREPARING SURVEYOR & MAPPER'S STATEMENT  
 THIS INSTRUMENT WAS PREPARED BY  
 JOHN E. PHILLIPS III, P.S.M. 4826

**BROWN & PHILLIPS, INC.**  
 CERTIFICATE OF AUTHORIZATION # LB 6473  
 1860 OLD OKEECHOBEE RD., SUITE 509  
 WEST PALM BEACH, FLORIDA 33409  
 561-615-3988, 615-3986 FAX

S:\2022\Survey\2022\1812\1812.PLC (in Station) Survey and Platting - 1/26/2023 10:25:10 AM AutoCAD 2023\DWG\DWG1.dwg